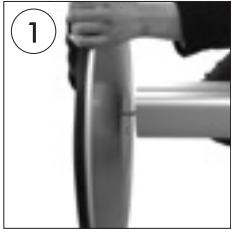
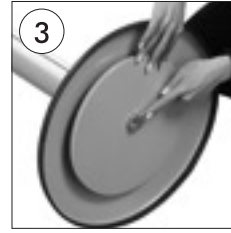


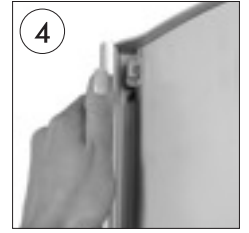
# FREE STANDING CONVEX BOX



• Fix the base to the pole.



• Screw the steel plate to the base.



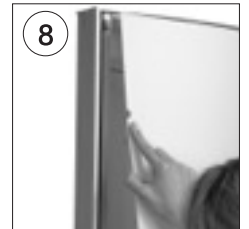
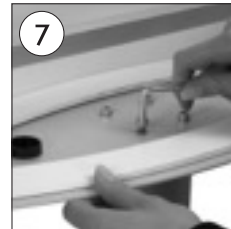
• Open the side profiles.



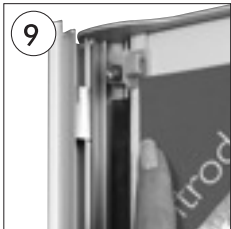
• Open the anti-reflex cover.



• Place the convex box on the pole. fix it with the screws



• Fix the white backing to the channels of the side profile.



• Slide poster by rubbing it passed into clips on corners as is in photo.



• After placing the cover back on the poster, close the profiles downwards.

