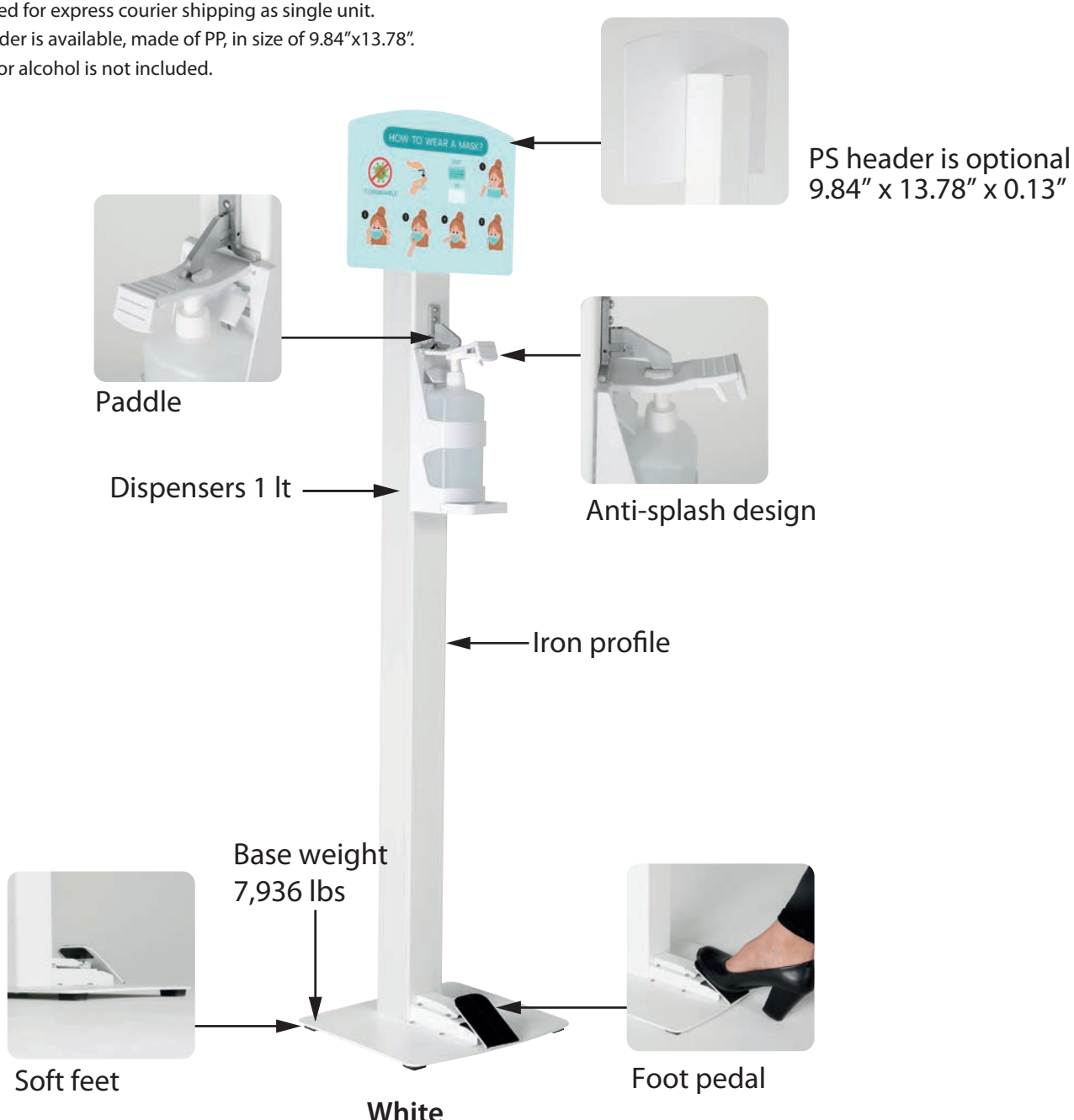


BASIC TOUCHLESS DISPENSER STAND, FOOT OPERATED

NO TOUCH! NO BATTERIES! NOT SENSORS!

Basic Touchless Dispenser Stand is designed to suit for use in any environment. It is operated by foot to avoid any unnecessary contact. Basic Touchless Dispenser Stand is a low-cost sanitising option where water and soap is not very easy to reach. It has heavy and sturdy construction for use outdoor conditions. It can be positioned in maximum traffic flow areas rather than being missed as may happen with wall-mounted dispensers. The pedal squeeze enables to apply disinfectant sanitizing gel or alcohol. Dispenser is fixed at convenient height. Optional header allows adding appropriate messages to users (whether staff, visitors or customers) or promoting a brand. Basic Touchless Dispenser Stand is suitable for commercial space, lobby, school, gyms, office, buildings, shopping malls and even industrial purposes.

- Stand is made of sturdy powder-coated steel.
- Dispenser holder made of shutter-proof ABS and bottle is PE.
- Flat steel base is 11.81"x12.60" and weighs 7,936 lbs.
- Textured finish
- 1L dispenser bottle is easily refillable with sanitizing gel or alcohol. And pump top mechanism to provide quick and easy access to disinfection.
- Dispenser bottle has spring loaded locking system to prevent foreign access. It is easy to access for clearing or refilling the gel or liquid by the shop or maintenance staff.
- Paddle at top allows large range of motion for dispensing. It is tested for use around 700.000 times.
- Pedal coated with EVA for comfortability and designed for ergonomic use and tested for use around 700.000 times without failure.
- Lever stays open for easy access during change of bottle. Pump is placed into the nest under the lever to avoid pump moving around.
- Pump nozzle faces 120° downwards allowing alcohol /gel into hand avoiding to spill over or wasting alcohol/gel.
- Drip tray included, inserts into the holder with a basic locking system to prevent loosing.
- Standard height is 52.56".
- Standard colours Silver, Black and White. Custom colours are available.
- Pedal
- Simple assembly required. Installation can be undertaken by any member of staff without specialist tools or know-how.
- Packed in 3 boxes.
- Recommended for express courier shipping as single unit.
- Optional header is available, made of PP, in size of 9.84"x13.78".
- Sanitizer gel or alcohol is not included.



ARTICLE	DESCRIPTION	WEIGHT WITH PACKING	PACKING SIZE
UHTDBG2000	Silver	21.715 lbs	4.92" X 53.94" X 3.94" / 12.99" X 13.78" X 2.36" / 4.72" X 6.69" X 11.81"
UHTDBB2000	Black	21.715 lbs	4.92" X 53.94" X 3.94" / 12.99" X 13.78" X 2.36" / 4.72" X 6.69" X 11.81"
UHTDBW2000	White	21.715 lbs	4.92" X 53.94" X 3.94" / 12.99" X 13.78" X 2.36" / 4.72" X 6.69" X 11.81"
UYPHDB010	Header		

Specifications

Operation	by foot pedal
Total height	52.56"
Stand and base material	Steel
Dispenser material	ABS
Standard Colour of Stand	Textured Silver, Black and White
Colour of dispenser	White
Number of box	3

