

## CURVED MENUBOARD WITH ACRYLED



## MENUBOARDS ILLUMINATED WITH LED TECHNOLOGY

Curved Menuboard with Acryled has both silver & black finish. Curved Menuboard is suitable to use in hotels, galleries, museums, restaurants, lobby, bars. Available in 11" X 17" and 8.5" X 11" portrait and landscape positions. Special treated acrylic and LED technology illuminates prints homogenous. The edgelit Acryled mounts on Curved Menuboard both portrait & landscape. Poster placed in position by 2 clear clips on 2 short sides.

## KEY SELECTION ATTRIBUTES

- \* Curved Menuboard with specially treated acrylic and LED technology for illuminating prints homogeneously.
- \* Suitable for poster sizes 11" X 17" and 8.5" X 11" in portrait and landscape positions.
- \* One set includes a powder coated heavy base, aluminium ellipse profile curved body with an on/off switch at the top, a cable outlet & power adapter at the bottom, and an edgelit acryled poster holder with a sight angle that catches the eye level.

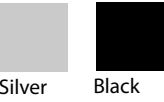
- \* Poster is placed in position by 2 clear clips on 2 short sides.
- \* Natural silver-anodized, black and various RAL colors available with antimicrobial powder coating.
- \* Heavy elegant base provides stability.
- \* Packed unassembled in a sturdy box.



One product,  
two positions  
(landscape & portrait)



COLOURS IN STOCK



SUITABLE FOR

Menuboards can be used for INDOOR applications, for signage needs in many locations like shopping centers, markets, groceries, hotels, offices airports, shops and stores, hospitals, schools, apartments and many more.

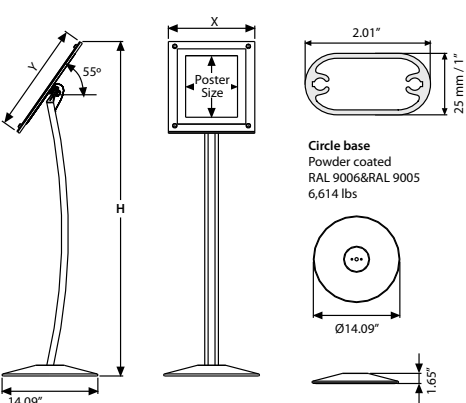
FEATURES



EXPLODED VIEW



TECHNICAL DRAWING



ARTICLES

SILVER	BLACK	EXTERNAL (x-y)	POSTER	COPY	HEIGHT	DESCRIPTION	WEIGHT	PACKING SIZE
							WITH PACKING	*W X H X D
VDVBM01192	VDVBMC1192	12.95" X 16.14"	8.5" X 11"	7.79" X 10.29"	49.21"	8.5"x11" portrait	15.763 lbs	14.37" X 43.70" X 4.02"
					47.83"	8.5"x11" landscape		
VDVBM01128	VDVBMC1128	16.14" X 20.98"	11" X 17"	10.259" X 16.29"	51.30"	11"x17" portrait	18.408 lbs	30.87" X 53.15" X 4.33"
					49.21"	11"x17" landscape		

OPTIONAL ACCESSORIES



Adapter for 8.5" X 11" Brochure Holder (30 Pcs)

Adapter for 5.83" x 8.27" Holder (45 Pcs)



8.5" X 11" Brochure Holder (30 Pcs)



8.5" X 11" Brochure Holder (45 Pcs)



## PHYSICAL DATA

### Material

1"x2" aluminium ellipse profile curved body, specially treated edgelit acryled poster holder with poster clips and cover. Acrylic optional shelves.

### Poster Material & Thickness

0.0039" – 0.0078" for standard product. Max poster thickness is 0.19". any non-standard poster thicknesses should be indicated with order.

### Surface Finish

Silver anodized or black colour, antimicrobial powder coating. Custom colors also available, call for custom color requests.

### Recycled Content

Up to 78% recycled content used.

### Warranty

All products are guaranteed for 3 years by Displays Outlet with below conditions:

[Warranty Conditions](#)

### Storage Conditions

Goods should be stored at 32°F to 77°F in a dry place. Store in the original package.

### Installation Considerations

Menuboards are packed unassembled in a sturdy box with an easy-to-understand instruction sheet & fixing elements. One set includes a powder coated heavy base, aluminium ellipse profile curved body with an on/off switch at the top, a cable outlet & power adapter at the bottom, and an edgelit acryled poster holder with poster clips and cover. Poster is placed in position by 2 clear clips on 2 short sides. When the nut on the back of frame is loose, frame can be placed in either portrait or landscape position. Optional brochure holder and its adapter should be ordered separately.

### Cleaning and Disinfecting

Clean your displays, with damp microfiber clothes, rinsed with simply water or warm, soapy or gentle shampooed water. Avoid using vinegar, abrasive, acidic, alcohol-based or heavy cleaners or cleaners containing Ammonia. Only after cleaning the product, if needed, simply apply disinfectant or sanitizer that is in compliance with your local guidelines and regulations.

### Design Considerations

LED technology illuminates the posters and papers. Suitable for 11" X 17" and 8.5" X 11" poster sizes in Landscape and Portrait positions with a sight angle that catches the eye level. The heavy elegant base provides stability.

### Hazardous Substances

Displays Outlet prioritizes compliance with the REACH (Registration, Evaluation, Authorisation and Restriction of Chemicals ) and RoHS (Restriction of Hazardous Substances) directives to protect both the environment and human health. We ensure that our products do not contain substances listed under REACH and adhere to strict RoHS limits for hazardous materials. Our manufacturing process ensures that lead, mercury, cadmium, and other restricted substances remain within the permitted thresholds, guaranteeing safe and sustainable products for our customers.

## PRINT TEMPLATES

### Simplistic Curved Menuboard - 8.5"x11"

Document Size: 8.89" x 11.4" (Includes Bleeds)

Finished Size: 8.5" x 11"

### Simplistic Curved Menuboard - 11"x17"

Document Size: 11.4" x 17.4" (Includes Bleeds)

Finished Size: 11" x 17"

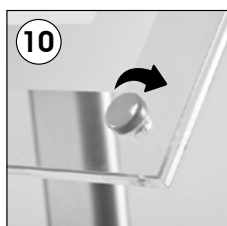
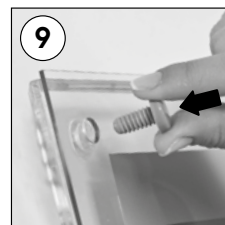
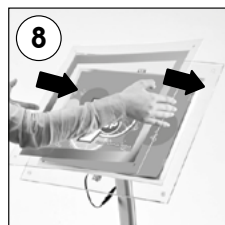
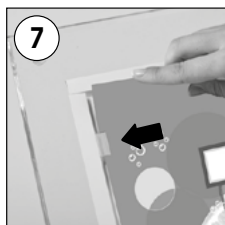
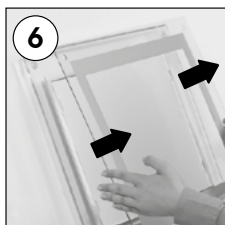
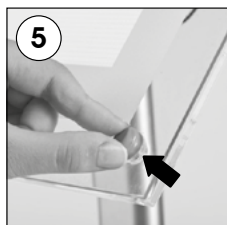
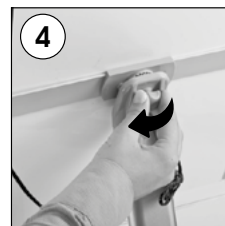
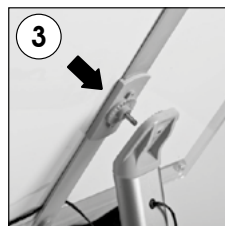
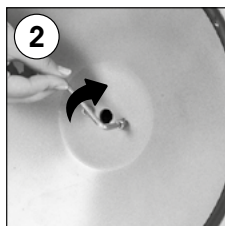
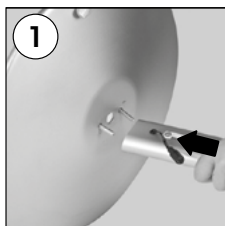


# INSTALLATION INSTRUCTIONS

## Curved Menubard with Acryled / 1007020

### Each product includes

- 1 x Main body profile
- 1 x Base
- 1 x AcryLED
- 1 x Power Adapter
- 2 x Bolt M6x25
- 1 x 5 allen key
- 1 x Power adapter



Landscape or portrait position



• Please inform the order number on the product or on the carton (e.g. 1/110001394-460) to the place that you have made the purchase if any problem with the product occurs.

• All rights reserved. All pictures, figures and writings are secured internationally by copy-right law. Infringements will be sued by civil and legal law.

This technical sheet's contents are all subject to update and modification at Dispalys Outlet' exclusive discretion. There is nothing official about this document. For final and legally binding information, please get in touch with the sales staff at Dispalys Outlet.



T: +1 855-478-0652 / [info@displaysoutlet.com](mailto:info@displaysoutlet.com) / [www.displaysoutlet.com](http://www.displaysoutlet.com)