

## DOUBLE SIDED SLIDE-IN FRAME



## SIMPLE TO USE BUT VERY EFFECTIVE IN APPLICATION

A Double Sided Slide-in Frame, made of quality aluminium, enables you to easily change your posters by sliding the graphics in&out. Anti reflective and transparent, PET cover sheets in the frame protects your poster from any sun and light effects. Plastic hooks are designed to hang the sign frame on the head of a screw or nail, on the wall or ceiling and suitable for outdoor conditions. These plastic clips are visible and mounted on the upper side of the frame. The poster is inserted only from one side by simply sliding the panels out and placing the posters. Once mounted, change of a poster does not require the frame to leave the wall, with this type of sliding frame, you can insert 2 rear - to- back posters.

## KEY SELECTION ATTRIBUTES

- Ideal for posters of various sizes.
- Custom sizes options ranging from a minimum of 5.82"x8.26" to a maximum of 39.37"x39.37".
- Natural silver-anodized and various RAL colors are available with antimicrobial powder coating.
- 2 Anti-glare poster cover sheets.
- 2 moving hangers.
- Landscape and portrait positions.
- Suction caps are optional.



8.5" X 11" size portrait



8.5" X 11" size landscape

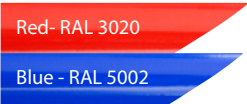
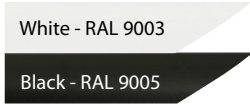


COLOURS IN STOCK



Silver

COLOUR OPTIONS



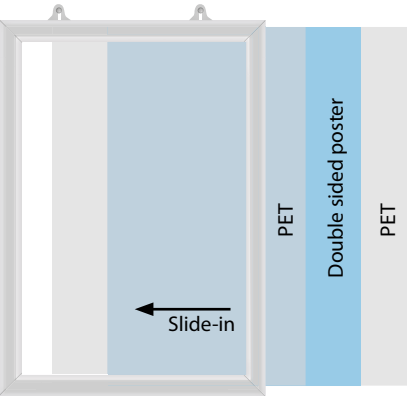
SUITABLE FOR

Slide-in Frames can be used for INDOOR or OUTDOOR applications under a top shelter, for publishing various messages in many locations like shopping centers, markets, groceries, hotels, offices airports, shops and stores, hospitals, schools, apartments banks, car dealers, restaurants, telecom companies, insurance companies, libraries, museums, travel agencies and many more.

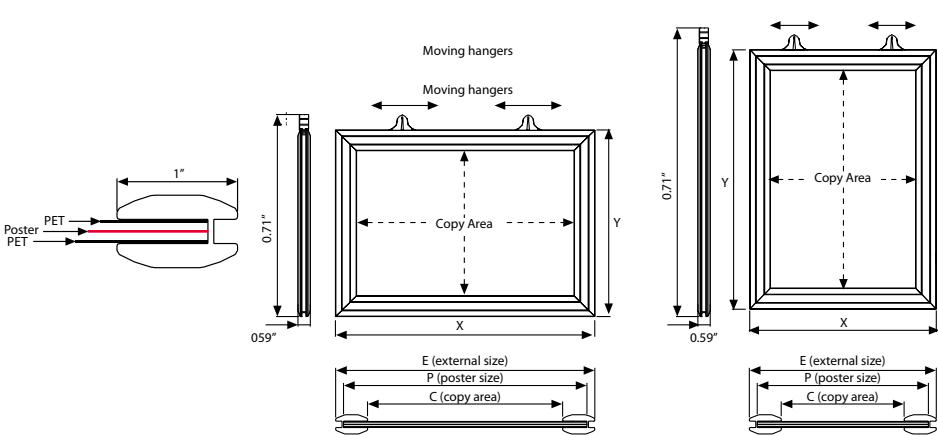
FEATURES



EXPLODED VIEW



TECHNICAL DRAWING



ARTICLES

PORTRAIT	EXTERNAL(x-y)	POSTER	COPY
VDT3660292	9.06" X 11.57"	8.5" X 11"	7.09" X 9.61"
VDT3660228	11.57" X 17.56"	11" X 17"	9.61" X 15.59"
-	18.58" X 24.57"	18" X 24"	16.61" X 22.60"
VDT3660233	22.56" X 28.58"	22" X 28"	20.59" X 26.61"
VDT366C292	9.06" X 11.57"	8.5" X 11"	7.09" X 9.61"
VDT366C228	11.57" X 17.56"	11" X 17"	9.61" X 15.59"
-	18.58" X 24.57"	18" X 24"	16.61" X 22.60"
VDT366C233	22.56" X 28.58"	22" X 28"	20.59" X 26.61"

WEIGHT	PACKING SIZE
WITH PACKING	*W X H X D
1.102 lbs	10.63" X 12.99" X 0.83"
1.873 lbs	12.99" X 18.90" X 0.83"
2.645 lbs	20.08" X 25.98" X 0.83"
3.637 lbs	24.02" X 30.31" X 0.83"
1.102 lbs	10.63" X 12.99" X 0.83"
1.873 lbs	12.99" X 18.90" X 0.83"
2.645 lbs	20.08" X 25.98" X 0.83"
3.637 lbs	24.02" X 30.31" X 0.83"

OPTIONAL ACCESSORIES



Suction cap. Packed in 10.



PHYSICAL DATA

Material

1" aluminum profiles. 2 PET poster covers

Surface Finish

Silver anodized or black colour, antimicrobial powder coating. Custom colors also available, call for custom color requests.

Recycled Content

Up to 70% recycled content used.

Warranty

All products are guaranteed for 3 years by MT Displays with below conditions:  
[Warranty Conditions](#)

Storage Conditions

Goods should be stored at 32°F to 77°F in a dry place. Store in the original package.

Installation Considerations

Each frame includes 2 suspension hangers. Each frame is packed individual in carton box. Moving hangers provide easy positioning for hanging.

Poster Material & Thickness

0.0039" – 0.0078" for standard product. Max poster thickness is 0.11" when used with PETposter protection and 0.15" when used without PET protection. Any non-standard poster thicknesses should be indicated with order.

Design Considerations

Suitable for silk screen printing, max. letter height is 0.35".

Cleaning and Disinfecting

Clean your displays, with damp microfiber clothes, rinsed with simply water or warm, soapy or gentle shampooed water. Avoid using vinegar, abrasive, acidic, alcohol-based or heavy cleaners or cleaners containing Ammonia. Only after cleaning the product, if needed, simply apply disinfectant or sanitizer that is in compliance with your local guidelines and regulations.

Hazardous Substances

Displays Outlet prioritizes compliance with the REACH (Registration, Evaluation, Authorisation and Restriction of Chemicals ) and RoHS (Restriction of Hazardous Substances) directives to protect both the environment and human health. We ensure that our products do not contain substances listed under REACH and adhere to strict RoHS limits for hazardous materials. Our manufacturing process ensures that lead, mercury, cadmium, and other restricted substances remain within the permitted thresholds, guaranteeing safe and sustainable products for our customers.

PRINT TEMPLATES

Double Sided Slide-in Frame - 8.5"x11"

Document Size: 8.9" x 11.4" (Includes Bleeds)  
Finished Size: 8.5"x11"

Double Sided Slide-in Frame - 18"x24"

Document Size: 18.4" x 24.4" (Includes Bleeds)  
Finished Size: 18"x24"

Double Sided Slide-in Frame - 22"x28"

Document Size: 22.4" x 28.4" (Includes Bleeds)  
Finished Size: 22"x28"

Double Sided Slide-in Frame - 11"x17"

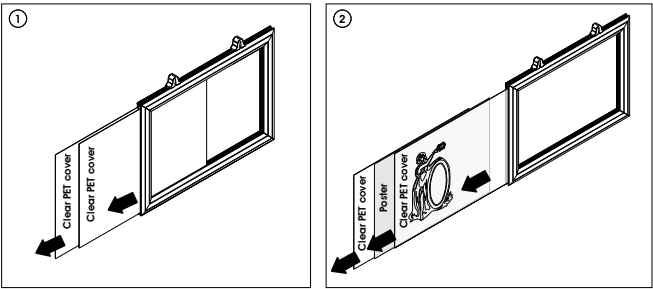
Document Size: 11.4" x 17.4" (Includes Bleeds)  
Finished Size: 11"x17"

Double Sided Slide-in Frame - 20"x30"

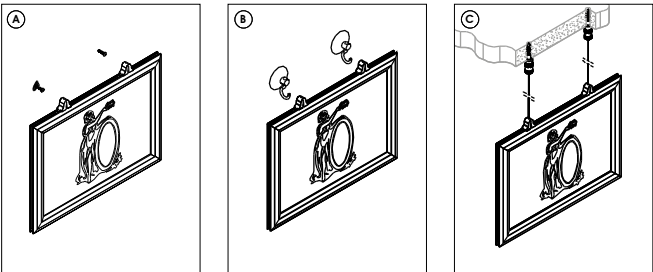
Document Size: 20.4" x 30.4" (Includes Bleeds)  
Finished Size: 20"x30"

INSTALLATION INSTRUCTIONS

Double Sided Slide-in Frame Landscape / 1001928



3 different mounting styles

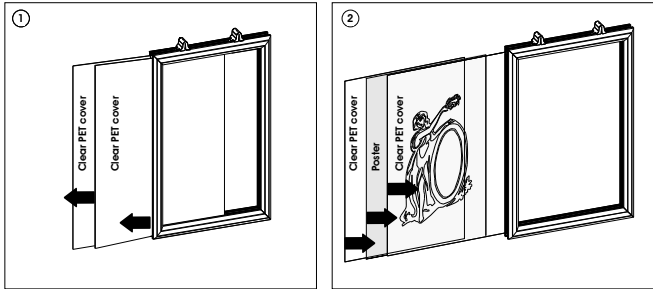


\*All accessories in the pictures are optional, are not included in standard kits.  
Plastic hangers in pictures 3 are included in all frames.

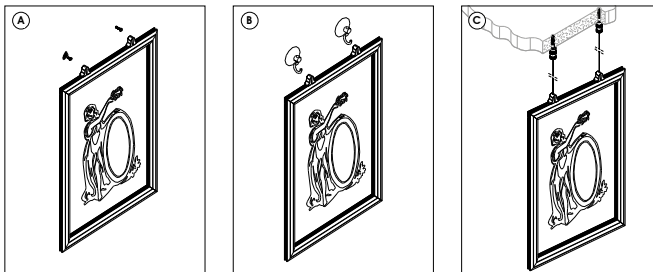
\*All accessories in the pictures are optional, are not included in standard kits.  
Plastic hangers in pictures 3 are included in all frames.

\*Please inform the order number on the product or on the carton (e.g. 1/110001394-460) to the place that you have made the purchase if  
\*any problem with the product occurs. All rights reserved. All pictures, figures and writings are secured internationally by copy-right law.  
Infringements will be sued by civil and legal law.

Double Sided Slide-in Frame Portrait / 1001929



3 different mounting styles



\*All accessories in the pictures are optional, are not included in standard kits.  
Plastic hangers in pictures 3 are included in all frames.

\*All accessories in the pictures are optional, are not included in standard kits.  
Plastic hangers in pictures 3 are included in all frames.

\* All rights reserved. All pictures, figures and writings are secured internationally by copy-right law. Infringements will be sued by civil and legal law.  
\* Please inform the order number on the product or on the carton (e.g. 1/110001394-460) to the place that you have made the purchase if  
any problem with the product occurs.

This technical sheet's contents are all subject to update and modification at Displays Outlet' exclusive discretion. There is nothing official about this document. For final and legally binding information, please get in touch with the sales staff at Displays Outlet.



T: +1 855-478-0652 / [info@displaysoutlet.com](mailto:info@displaysoutlet.com)/ [www.displaysoutlet.com](http://www.displaysoutlet.com)