

FLOOR STANDING REFERENCE RACK



DISPLAY YOUR BROCHURES ON A STABLE RACK WITH A HEAVY BASE

Heavy base Floor Standing Reference Rack System with capacity of 10 PET display pockets. Sturdy steel stand allows you to organize busy environments. Do not forget to order pockets separately. Holds 10 pockets at a time allowing to display 20 pages. Pockets are flip easy and double sided, allowing you to display 20 pages at a time.

KEY SELECTION ATTRIBUTES

- * Floor Standing Reference Rack with a heavy sturdy base and pole.
- * Allows extra brochure holder on the pole.
- * Capacity of holding 10 PET pockets in one top rack.
- * Double sided pockets allow to display 20 different pages.
- * Pockets are not included in the system.
- Pocket frames in three color options as red, black and grey.
- Please don't forget to order pockets & tab insets separately.



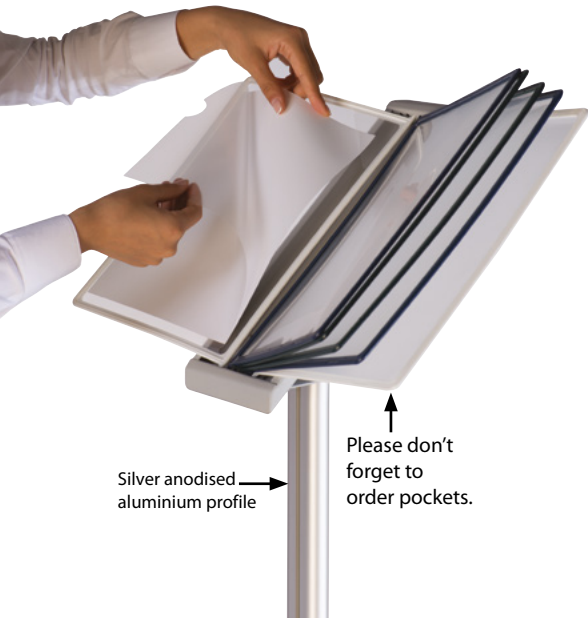
SUITABLE FOR

Reference Racks can be used for INDOOR applications, for signage needs in many locations like shopping centers, markets, hotels, offices airports, shops and stores, hospitals, schools, apartments and many more.

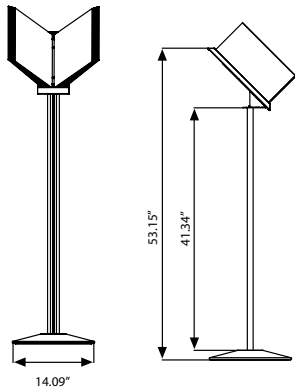
FEATURES



EXPLODED VIEW



TECHNICAL DRAWING



ARTICLES

ARTICLE	PAPER SIZE	DESCRIPTION	WEIGHT	PACKING SIZE
			WITH PACKING	*W X H X D
VSL1601192	8.5" X 11"	Silver Rack	20.282 lbs	2.76" X 44.09" X 1.57" / 14.96" X 15.35" X 1.97" / 6.30" X 16.54" X 4.33"

OPTIONAL ACCESSORIES



POSTER POCKET			WEIGHT	PACKING SIZE(10 Pcs)
ARTICLE	PAPER SIZE	DESCRIPTION	WITH PACKING	*W X H X D
UBC1601215	8.5" X 11"	Red	1.212 lbs	15.35" X 21.65" X 23.23"
UBC1601212	8.5" X 11"	Black	1.212 lbs	15.35" X 21.65" X 23.23"
UBC1601210	8.5" X 11"	Grey	1.212 lbs	15.35" X 21.65" X 23.23"



Tab & Inset. Please don't forget to order. TAB5904003

PHYSICAL DATA

Material
Heavy steel base, aluminium profile post, metal connecting sheet, metal rack body sheet, plastic inserts, PET pockets with plastic frames..

Surface Finish
RAL9006 powder coated steel base, silver anodised aluminium profile post, metal connecting sheet, metal rack body sheet, plastic inserts, PET pockets with plastic frames.

Poster Material & Thickness
Poster Material & Thickness Poster Material & Thickness 0.0078" for standard product. Max poster thickness is 0.0039". Any non-standard poster thicknesses should be indicated with order.

Warranty
All products are guaranteed for 1 years by Dispalys Outlet with below conditions:
[Warranty Conditions](#)

Installation Considerations
Packed unassembled. Sturdy base for a stable and secure unit. Pockets and index tab&insets should be ordered seperately. 3 packs. See info chart for pack sizes.

Storage Conditions
Goods should be stored at 32°F to 77°F in a dry place. Store in the original package.

Cleaning and Disinfecting
Clean your displays, with damp microfiber clothes, rinsed with simply water or warm, soapy or gentle shampooed water. Avoid using vinegar, abrasive, acidic, alcohol-based or heavy cleaners or cleaners containing Ammonia. Only after cleaning the product, if needed, simply apply disinfectant or sanitizer that is in compliance with your local guidelines and regulations.

Design Considerations
Holds 10 pockets at a time. Pockets available in Red, Black and Grey. Double sided pockets allows to display 20 different pages.

Hazardous Substances
Displays Outlet prioritizes compliance with the REACH (Registration, Evaluation, Authorisation and Restriction of Chemicals) and RoHS (Restriction of Hazardous Substances) directives to protect both the environment and human health. We ensure that our products do not contain substances listed under REACH and adhere to strict RoHS limits for hazardous materials. Our manufacturing process ensures that lead, mercury, cadmium, and other restricted substances remain within the permitted thresholds, guaranteeing safe and sustainable products for our customers.

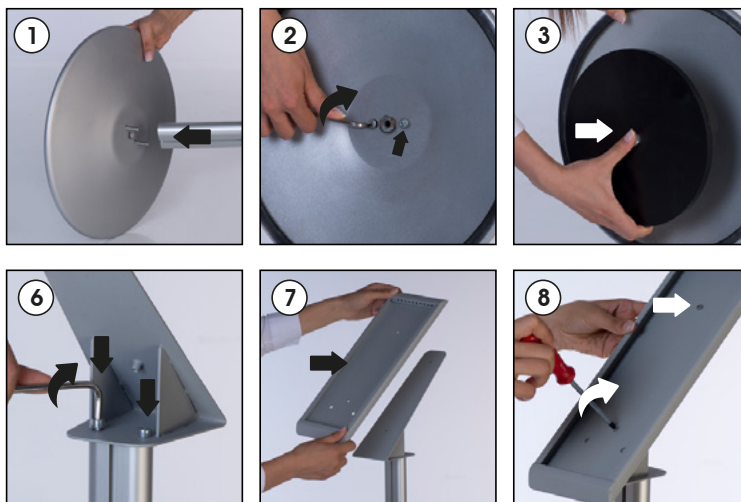


INSTALLATION INSTRUCTIONS

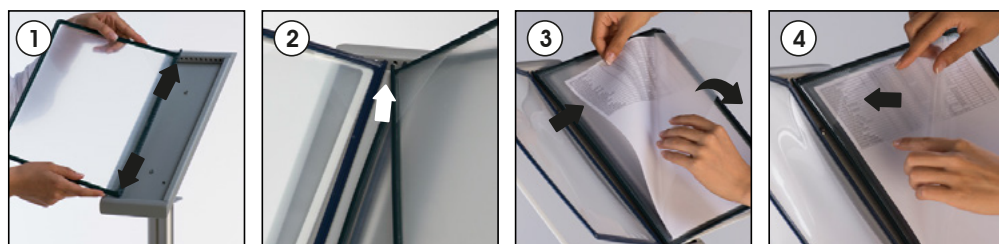
Floor Standing Reference Rack / 1009794H000

Each product package includes

- 1 x Main body profile
- 1 x Base Ø358x40 mm
- 1 x Base weight flange Ø230x10 mm
- 1 x Main body profile connecting sheet
- 1 x Reference Rack body sheet
- 2 x Bolt M6x15
- 2 x Bolt M4x10
- 2 x Bolt M6x25
- 1 x Bolt M10x30
- 1 x 5 Allen key



Attaching the Poster Pockets and Poster



CAUTION : PET Pockets are not included in the pack. Please don't forget to order. Pockets in 3 colours (red, black, gray). Each colour boxed in 10 pcs.



- Please inform the order number on the product or on the carton (e.g. 1/110001394-460) to the place that you have made the purchase if any problem with the product occurs.
- All rights reserved. All pictures, figures and writings are secured internationally by copy-right law. Infringements will be sued by civil and legal law.

This technical sheet's contents are all subject to update and modification at Dispalys Outlet' exclusive discretion. There is nothing official about this document. For final and legally binding information, please get in touch with the sales staff at Dispalys Outlet.



T: +1 855-478-0652 / info@displaysoutlet.com / www.displaysoutlet.com