

A BOARDS



DOUBLE SIDED SIDEWALK SIGNS WITH CLICK CLACK OPENING DESIGN

Header board and brochure basket options are available. Easy-to-open snap frame includes the anti-reflex cover in all standard A boards. Frame size alternatives are 20"x30", 22"x28" and 30"x40".

KEY SELECTION ATTRIBUTES

- * Double-sided Pavement Sign with "Click Clack" snap open design
- * Suitable for poster sizes 20"x30", 22"x28" and 30"x40"
- * One set includes double sided snap open frames, 2 anti-reflex poster covers, hinges, and scissors for keeping the system stable.
- * Optional Wire Header Holder, Header Board and Brochure Baskets are

not included, should be ordered separately.

- * Galvanised metal back panel provides stability.
- * Natural silver-anodized, black in standard and various RAL colors available with antimicrobial powder coating.
- * Packed in a single box.



Black, Round Corner



Round corner



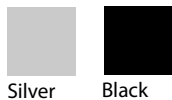
Silver, Round Corner



Black, Mitred Corner



COLOURS IN STOCK



Silver Black

COLOUR OPTIONS

White - RAL 9003

Red - RAL 3020

Green - RAL 6029

Blue - RAL 5002

CORNER TYPES



SUITABLE FOR

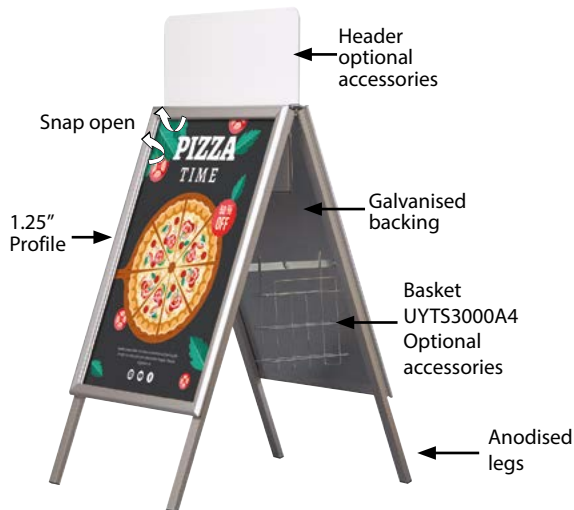
A Boards can be used for INDOOR and OUTDOOR applications, for signage needs in many locations like shopping centers, markets, groceries, hotels, offices airports, shops and stores, hospitals, schools, apartments and many more.

FEATURES

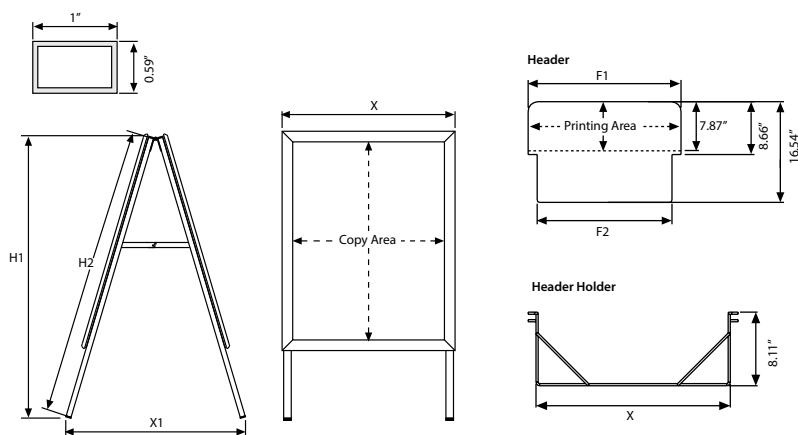


Also see with safe corner

EXPLODED VIEW



TECHNICAL DRAWING



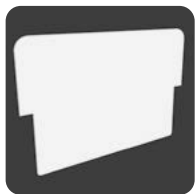
ARTICLES

											WEIGHT	PACKING SIZE
											WITH PACKING	*W X H X D
MITRED SILVER	ROUND SILVER	MITRED BLACK	ROUND BLACK	SAFE CORNER	POSTER	X	X1	H1	H2		19.841 lbs	25.59" X 44.09" X 4.41"
-	-	-	-	-	20" X 30"	21.69"	27.56"	905 mm	950 mm		19.841 lbs	27.56" X 42.13" X 4.41"
VBC4361033	-	-	-	-	22" X 28"	19.69"	27.56"	1195 mm	1250 mm		30.423 lbs	31.89" X 50.39" X 4.41"
VBC4361045	-	-	-	-	30" X 40"	31.69"	33.46"	47.04"	49.21"			



T: +1 855-478-0652 / info@displaysoutlet.com/ www.displaysoutlet.com

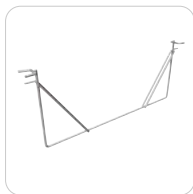
OPTIONAL ACCESSORIES



A Board header
(0,15" PVC Foam).



A board basket A4 size
to hang on scissors.



A Board wire header
holder.

PHYSICAL DATA

Material

1.25" aluminium profile click clack snap open frame, PET anti-reflex poster cover, galvanised metal backing. PVC Foam optional header.

Poster Material & Thickness

0.0039" – 0.0078" for standard product. Max poster thickness 0.118" for mitred corner, 0.078" for round corner. Any non-standard poster thicknesses should be indicated with order.

Surface Finish

Natural silver-anodized, or black in standard and various RAL colors available with antimicrobial powder coating. Call for custom color requests.

Recycled Content

Up to 70% recycled content used.

Warranty

All products are guaranteed for 2 years by Displays Outlet with below conditions:

[Warranty Conditions](#)

Installation Considerations

A Boards are packed in a single box with an easy-to-understand instruction sheet. One set includes double sided snap open frames, 2 anti-reflex poster covers, hinges, and scissors for keeping the system stable. Each unit has water drainage slots on bottom profiles. No tool assembly. Optional Wire Header Holder, Header Board and Brochure Baskets are not included, should be ordered seperately.

Storage Conditions

Goods should be stored at 32°F to 77°F in a dry place. Store in the original package.

Design Considerations

Double-sided Pavement Sign with "Click Clack" snap-open design. Suitable for silk screen printing, max. letter height is 0.62". Suitable for 20"x30", 22"x28" and 30"x40" poster sizes with a sight angle that stops passers-by. Galvanised metal heavy back panel provides stability.

Cleaning and Disinfecting

Clean your displays, with damp microfiber clothes, rinsed with simply water or warm, soapy or gentle shampooed water. Avoid using vinegar, abrasive, acidic, alcohol-based or heavy cleaners or cleaners containing Ammonia. Only after cleaning the product, if needed, simply apply disinfectant or sanitizer that is in compliance with your local guidelines and regulations.

Hazardous Substances

Displays Outlet prioritizes compliance with the REACH (Registration, Evaluation, Authorisation and Restriction of Chemicals) and RoHS (Restriction of Hazardous Substances) directives to protect both the environment and human health. We ensure that our products do not contain substances listed under REACH and adhere to strict RoHS limits for hazardous materials. Our manufacturing process ensures that lead, mercury, cadmium, and other restricted substances remain within the permitted thresholds, guaranteeing safe and sustainable products for our customers.

PRINT TEMPLATES

A Board - 20" x 30"

Document Size: 20.4" x 30.4" (Includes Bleeds)

Finished Size: 20" x 30"

A Board - 22" x 28"

Document Size: 22.4" x 28.4" (Includes Bleeds)

Finished Size: 22" x 28"

A Board - 30" x 40"

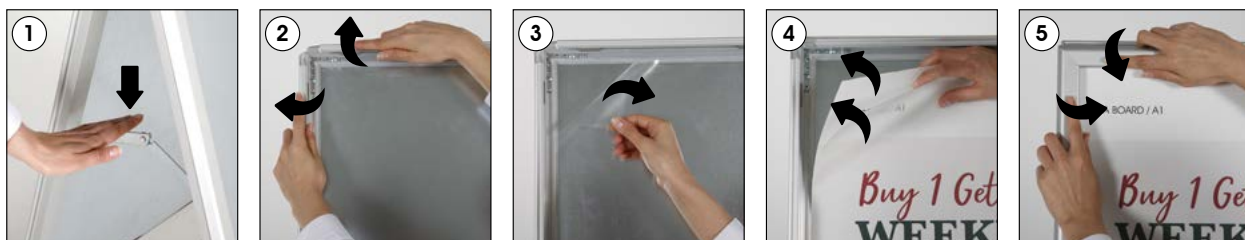
Document Size: 30.4" x 40.4" (Includes Bleeds)

Finished Size: 30" x 40"

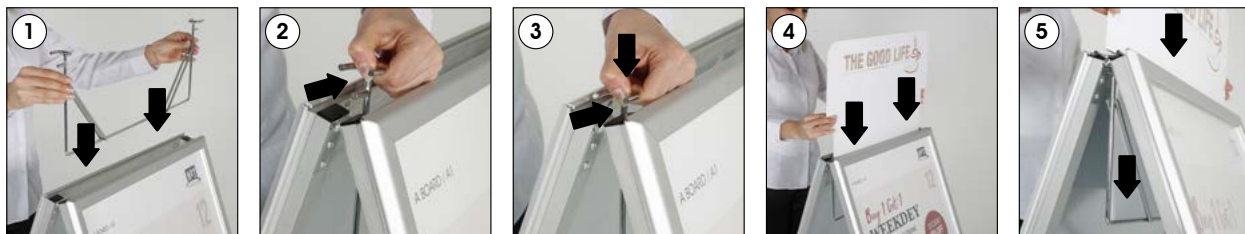


INSTALLATION INSTRUCTIONS

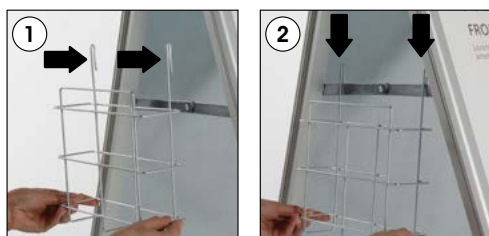
A Board



Optional Header & Header Holder



Optional Basket



Note: Wire header holder, PVC Foam header and baskets are optional.



- Please inform the order number on the product or on the carton (e.g. 1/110001394-460) to the place that you have made the purchase if any problem with the product occurs.
- All rights reserved. All pictures, figures and writings are secured internationally by copy-right law. Infringements will be sued by civil and legal law.

This technical sheet's contents are all subject to update and modification at Displays Outlet's exclusive discretion. There is nothing official about this document. For final and legally binding information, please get in touch with the sales staff at Displays Outlet.



T: +1 855-478-0652 / info@displaysoutlet.com / www.displaysoutlet.com