



DOUBLE SIDED SIDEWALK SIGNS WITH HEAVY LONG FEET

A double-sided customer stopper, practical to change the poster within. 22" x 28" sizes are available. 1.25" profile, snap frame. Round or mitred corner options.

KEY SELECTION ATTRIBUTES

- * Double-sided Pavement Sign with 1.25" frame Snap-Open design
- * Suitable for poster sizes 22" x 28"
- * One set includes double sided snap open frames with round or mitred corner options, 2 anti-reflex poster covers and heavy long feet for keeping the system stable.
- * Natural silver-anodized, black in standard

- and various RAL colors available with antimicrobial powder coating.
- * Packed unassembled.



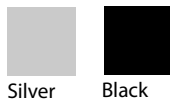
Round Corner



Mitred Corner



COLOURS IN STOCK



Silver Black

COLOUR OPTIONS



CORNER TYPES



SUITABLE FOR

Al Maki signs can be used for INDOOR and OUTDOOR applications, for signage needs in many locations like shopping centers, markets, groceries, hotels, offices airports, shops and stores, hospitals, schools, apartments and many more.

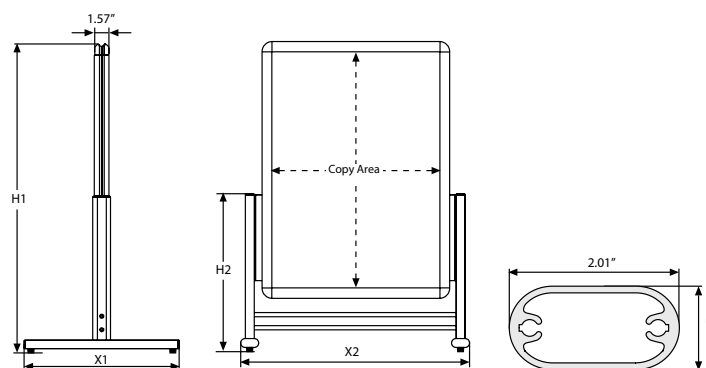
FEATURES



EXPLODED VIEW



TECHNICAL DRAWING



ARTICLES

ARTICLE	POSTER	X1	X2	H1	H2	WEIGHT	PACKING SIZE
						WITH PACKING	*W X H X D
VBN432D033	22" X 28"	24.41"	28.35"	34.65"	18.11"	13.668 lbs	25.98" X 33.46" X 2.76"

PRINT TEMPLATES

Al Maki - 22" x 28"

Document Size: 22.4" x 28.4" (Includes Bleeds)

Finished Size: 22" x 28"



T: +1 855-478-0652 / info@displaysoutlet.com / www.displaysoutlet.com

PHYSICAL DATA

Material

1.25" aluminium profile click clack snap open frame, PET anti-reflex poster cover, PS backing and 22" x 28"mm silver anodised aluminum profile feet.

Poster Material & Thickness

0.0039" – 0.0078" for standard product. Max poster thickness 0,118" for mitred corner, 0.078" for round corner. Any non-standard poster thicknesses should be indicated with order.

Surface Finish

Natural silver-anodized, or black in standard and various RAL colors available with antimicrobial powder coating. Call for custom color requests.

Recycled Content

Up to 78% recycled content used.

Storage Conditions

Goods should be stored at 32°F to 77°F in a dry place. Store in the original package.

Warranty

All products are guaranteed for 2 years by Displays Outlet with below conditions:

[Warranty Conditions](#)

Installation Considerations

Al Maki Signs are packed unassembled with an easy-to-understand instruction sheet & fixing set. One set includes double sided snap open frames, 2 anti-reflex poster covers, PS backing and heavy long feet on the base. Suitable for rainy conditions, protect the poster within. Thick & solid backing for outdoor use.<g

Design Considerations

Double-sided Pavement Sign with "Click Clack" snap-open design. Suitable for silk screen printing, max. letter height is 0.62". Suitable for 22" x 28" poster sizes with round or mitred corner options. Heavy long feet on the base provides stability.

Cleaning and Disinfecting

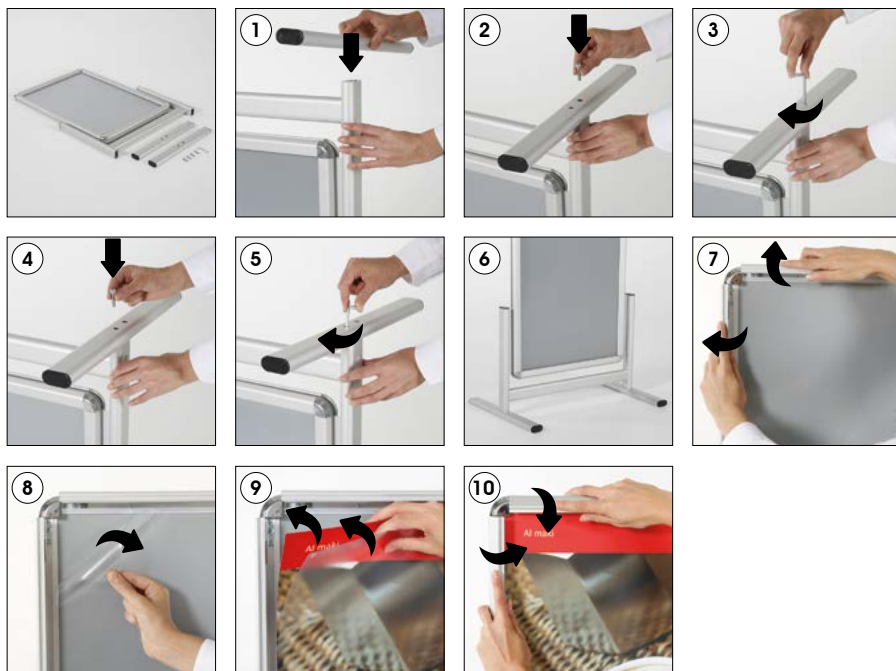
Clean your displays, with damp microfiber clothes, rinsed with simply water or warm, soapy or gentle shampooed water. Avoid using vinegar, abrasive, acidic, alcohol-based or heavy cleaners or cleaners containing Ammonia. Only after cleaning the product, if needed, simply apply disinfectant or sanitizer that is in compliance with your local guidelines and regulations.

Hazardous Substances

Displays Outlet prioritizes compliance with the REACH (Registration, Evaluation, Authorisation and Restriction of Chemicals) and RoHS (Restriction of Hazardous Substances) directives to protect both the environment and human health. We ensure that our products do not contain substances listed under REACH and adhere to strict RoHS limits for hazardous materials. Our manufacturing process ensures that lead, mercury, cadmium, and other restricted substances remain within the permitted thresholds, guaranteeing safe and sustainable products for our customers.

INSTALLATION INSTRUCTIONS

Al Maki / 1001885



Each Al Maki includes mounting accessories
(4 screws & 1 allen key)

• Please inform the order number on the product or on the carton (e.g. 1/110001394-460) to the place that you have made the purchase if any problem with the product occurs.

• All rights reserved. All pictures, figures and writings are secured internationally by copy-right law. Infringements will be sued by civil and legal law.



This technical sheet's contents are all subject to update and modification at Displays Outlet' exclusive discretion. There is nothing official about this document. For final and legally binding information, please get in touch with the sales staff at Displays Outlet.



T: +1 855-478-0652 / info@displaysoutlet.com / www.displaysoutlet.com