

## MAGNETIC GLASS BOARD



### EASY BOARDS FOR YOUR ADS, ITEMS, PROMOTIONS AND NOTES

Both magnetic and dry wipe, Magnetic Glass Board offers a smart solution for offices, colleges, meeting rooms, hotels, cafes and more. Red, Black and White colour options will suit various contemporary decoration. Tempered glass increases the strength against damages. Magnets, pen holder, eraser and pen included in the pack for comfortable immediate use.

### KEY SELECTION ATTRIBUTES

- \* Practical and wall-mounted tempered glass dry wipe magnetic board with optional shelf design.
- \* Suitable for INTERIOR use with 17.72" X 17.72", 15.75" X 23.62", 23.62" X 35.43" sizes in red, white and black colour options.
- \* Suitable for wall mounting in landscape or portrait positions.
- \* Perfect way to present/change messages, announcements or promotions.
- \* One set includes a tempered glass magnetic chalkboard with 1 pen, 1 pen holder, 1 eraser and magnets for changing notes easily; 2 hangers and 2 screws for installing on wall.

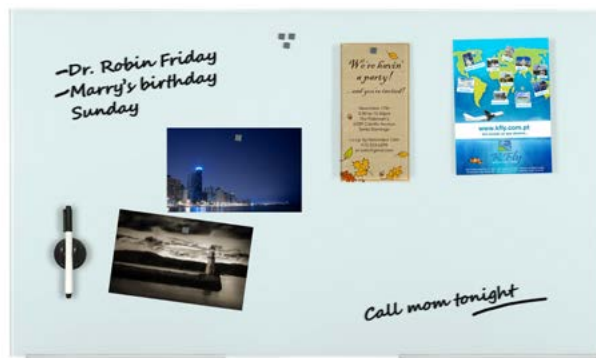
- \* Shelves are optional accessories, not included in the standard set. If needed, please order separately.
- \* Tempered glass with 4mm thickness increases the strength against damages.
- \* Each unit is packed in an individual box with mounting set and easy-to-understand installation sheet.



Black



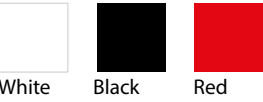
Red



White



COLOURS IN STOCK



White      Black      Red

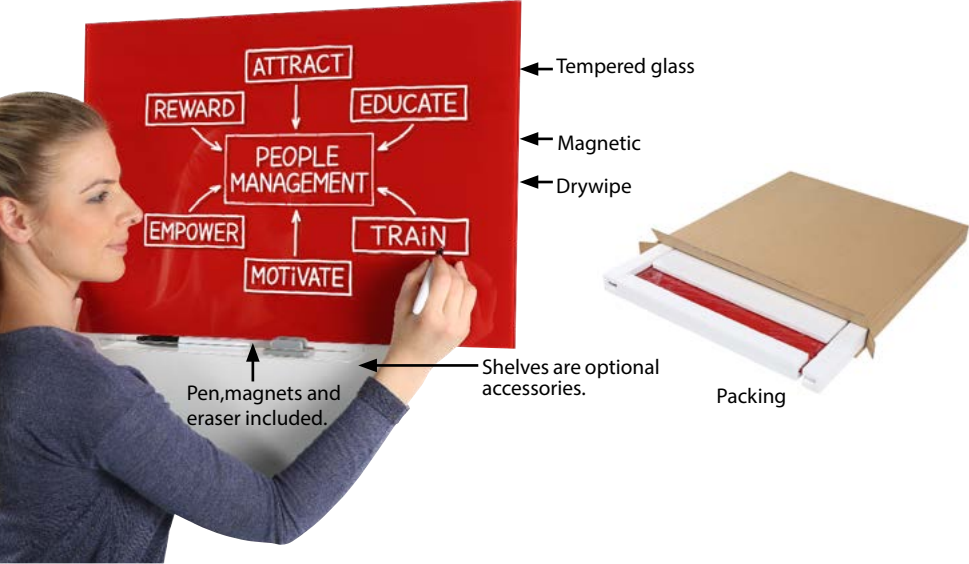
SUITABLE FOR

Magnetic Glass Boards can be used for INDOOR applications, for signage needs in many locations like shopping centers, markets, groceries, hotels, offices airports, shops and stores, hospitals, schools, apartments, banks, car dealers, restaurants, telecom companies, insurance companies, libraries, museums, travel agencies and many more.

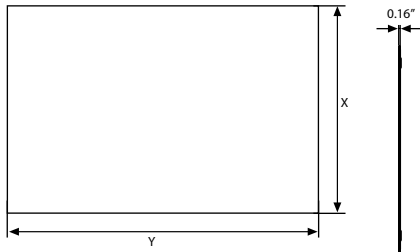
FEATURES



EXPLODED VIEW



TECHNICAL DRAWING



ARTICLES

| ARTICLE    | SIZE (x-y)   | COLOUR | WEIGHT       | PACKING SIZE      |
|------------|--------------|--------|--------------|-------------------|
|            |              |        | WITH PACKING | *W X H X D        |
| U11NHC1446 | 350 X 350 mm | White  | 1,600 kg     | 380 X 390 X 45 mm |
| U11NHC1246 | 350 X 350 mm | Black  | 1,600 kg     | 380 X 390 X 45 mm |
| U11NHC1546 | 350 X 350 mm | Red    | 1,600 kg     | 380 X 390 X 45 mm |
| U11NHC1456 | 450 X 450 mm | White  | 2,640 kg     | 480 X 490 X 45 mm |
| U11NHC1256 | 450 X 450 mm | Black  | 2,640 kg     | 480 X 490 X 45 mm |
| U11NHC1556 | 450 X 450 mm | Red    | 2,640 kg     | 480 X 490 X 45 mm |
| U11NHC1457 | 400 X 600 mm | White  | 3,120 kg     | 440 X 640 X 45 mm |
| U11NHC1257 | 400 X 600 mm | Black  | 3,120 kg     | 440 X 640 X 45 mm |
| U11NHC1557 | 400 X 600 mm | Red    | 3,120 kg     | 440 X 640 X 45 mm |
| U11NHC1470 | 600 X 900 mm | White  | 7,200 kg     | 680 X 980 X 65 mm |
| U11NHC1270 | 600 X 900 mm | Black  | 7,200 kg     | 680 X 980 X 65 mm |
| U11NHC1570 | 600 X 900 mm | Red    | 7,200 kg     | 680 X 980 X 65 mm |

OPTIONAL ACCESSORIES



Shelf for Magnetic Glass Board.



Colour chalkboard marker. 0.39" wide. 5 Pcs.



White chalkboard marker for Wood Display. 0.39" wide. 3 Pcs



## PHYSICAL DATA

### Material

Tempered glass magnetic chalkboard.

### Surface Finish

Red, white and black colours.

### Recycled Content

Up to 78% recycled content used.

### Warranty

All products are guaranteed for 3 years by Displays Outlet with below conditions:

[Warranty Conditions](#)

### Storage Conditions

Goods should be stored at 32°F to 77°F in a dry place. Store in the original package.

### Installation Considerations

Packed in an individual box with mounting set and easy-to-understand installation sheet. One set includes a tempered glass magnetic chalkboard with 1 pen, 1 pen holder, 1 eraser and magnets for changing notes easily; 2 hangers and 2 screws for installing on wall. Shelves are optional accessories, not included in the standard set. If needed, please order separately.

### Design Considerations

Practical and wall-mounted tempered glass dry wipe magnetic board with optional shelf design. Suitable for INTEROR use with 17.72" X 17.72", 15.75" X 23.62", 23.62" X 35.43" sizes in red, white and black colour options. Suitable for wall mounting in landscape or portrait

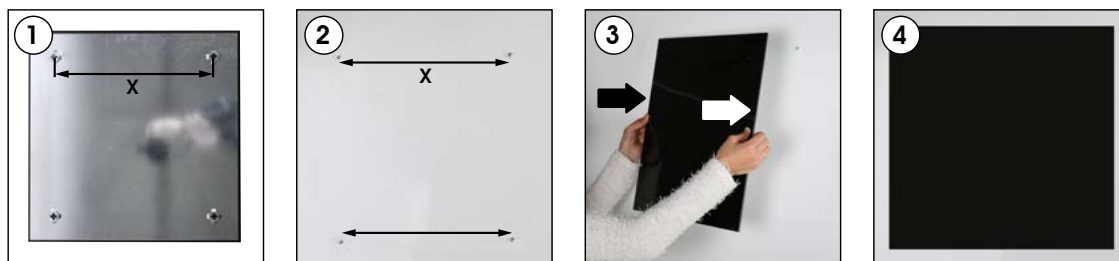
positions. Perfect way to present/change messages, announcements or promotions. Tempered glass with 0.16" thickness increases the strength against damages.

### Cleaning and Disinfecting

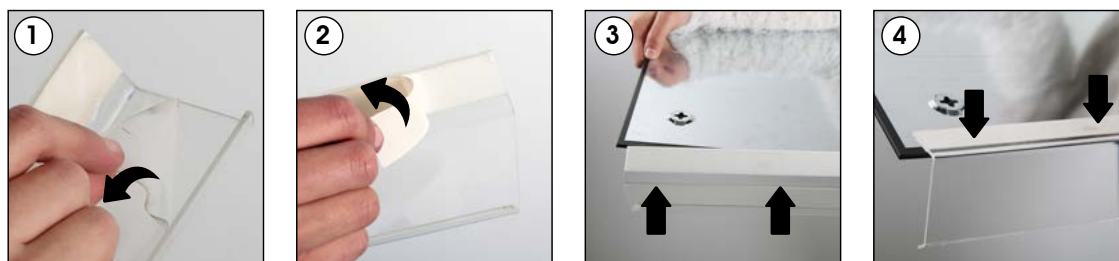
Clean your displays, with damp microfiber clothes, rinsed with simply water or warm, soapy or gentle shampooed water. Avoid using vinegar, abrasive, acidic, alcohol-based or heavy cleaners or cleaners containing Ammonia. Only after cleaning the product, if needed, simply apply disinfectant or sanitizer that is in compliance with your local guidelines and regulations.

## INSTALLATION INSTRUCTIONS

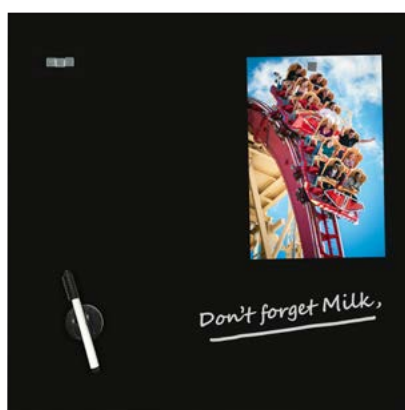
### Magnetic Glass Board / 1009159



Optional shelves



Accessories (rubber & marker & magnets) are included in the original box.



- Please inform the order number on the product or on the carton (e.g. 1/110001394-460) to the place that you have made the purchase if any problem with the product occurs.
- All rights reserved. All pictures, figures and writings are secured internationally by copy-right law. Infringements will be sued by civil and legal law.

This technical sheet's contents are all subject to update and modification at Displays Outlet' exclusive discretion. There is nothing official about this document. For final and legally binding information, please get in touch with the sales staff at Displays Outlet.



T: +1 855-478-0652 / [info@displaysoutlet.com](mailto:info@displaysoutlet.com) / [www.displaysoutlet.com](http://www.displaysoutlet.com)