

## OUTDOOR PREMIUM A BOARD WITH LOGO



## DOUBLE SIDED SIDEWALK SIGNS WITH ALUMINUM HEADER PROFILES

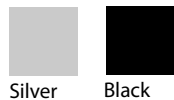
This heavy duty pavement sign is a perfect use for displaying posters and advertising signs with your own logo. Provides practical use, quick change-poster and logo. The replaceable aluminium composite plate is an ideal spot for a logo or a permanent message, suitable for outdoor conditions. You can print your logo directly or laminate on aluminium composite plate. The frame is hinged for easy transport and storage, with a locking stay to secure when open. Standard in silver anodised, available in standard RAL colours upon request with MOQ.

### KEY SELECTION ATTRIBUTES

- \* Double-sided Heavy Duty Pavement Sign with "Click Clack" Snap-open design.
- \* Suitable for Outdoor use with poster sizes 20"x30", 22"x28" and 30"x40"
- \* One set includes double sided snap open frames for quick poster change, 2 aluminium header profiles for displaying logo or permanent messages, 2 anti-reflex poster covers, hinges for easy transport and storage with a locking stay to secure when open, anodised legs and scissors for keeping the system stable.
- \* Logo can be laminated on aluminum header profile.
- \* Optional Brochure Baskets are not included, should be ordered separately.
- \* Heavy back panel provides stability.
- \* Natural silver-anodized, black in standard and various RAL colors available with antimicrobial powder coating.
- \* Packed in a single box with an easy-to-understand instruction sheet.
- \* No tool assembly.
- \* Each unit has water drainage slots on bottom profiles.



## COLOURS IN STOCK



Silver Black

## COLOUR OPTIONS

Black Anodised

Silver Anodised

White - RAL 9003

Black - RAL 9005

Red - RAL 3020

Blue - RAL 5002

Green - RAL 6029

Yellow - RAL 1021

## SUITABLE FOR

Premium A Board with Profile Logo can be used for OUTDOOR applications, for signage needs in many locations like shopping centers, markets, groceries, hotels, offices airports, shops and stores, hospitals, schools, apartments and many more.

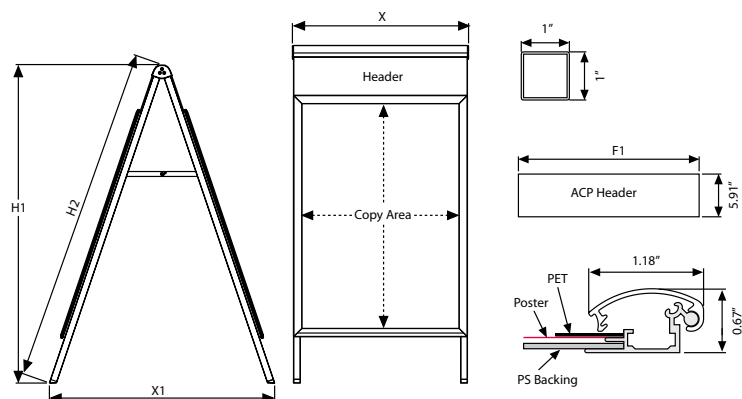
## FEATURES



## EXPLODED VIEW



## TECHNICAL DRAWING



## ARTICLES

ARTICLE	POSTER	X	X1	H1	H2	F1	FEET	WEIGHT	PACKING SIZE
								WITH PACKING	*W X H X D
-	20" X 30"	22.01"	30.51"	42.91"	45.67"	21.69"	43.66"	18.739 lbs	24.02" X 47.64" X 4.53"
VBQ1416033	22" X 28"	24.06"	32.48"	40.12"	42.68"	23.74"	41.54"	25.132 lbs	25.59" X 46.46" X 4.53"
VBQ1416045	30" X 40"	31.01"	37.01"	52.36"	55.51"	31.69"	53.50"	30.423 lbs	34.25" X 57.48" X 4.53"

## OPTIONAL ACCESSORIES



A board basket 8.27"x 11.69" size to hang on scissors.

## PRINT TEMPLATES

### Premium A Board with Logo - 20" x 30"

Document Size: 20.4" x 30.4" (Includes Bleeds)

Finished Size: 20" x 30"

### Premium A Board with Logo - 22" x 28"

Document Size: 22.4" x 28.4" (Includes Bleeds)

Finished Size: 22" x 28"

### Premium A Board with Logo - 30" x 40"

Document Size: 30.4" x 40.4" (Includes Bleeds)

Finished Size: 30" x 40"



T: +1 855-478-0652 / info@displaysoutlet.com/ www.displaysoutlet.com

## PHYSICAL DATA

### Material

1.18" aluminium profile click clack snap open frame, PET anti-reflex poster cover, galvanised metal backing, anodized legs. Alumium header profiles.

### Poster Material & Thickness

0.0039" – 0.0078" for standard product. Max poster thickness is 0.04" Any non-standard poster thicknesses should be indicated with order.

### Surface Finish

Grey color logo plate. Natural silver-anodized, or black frame in standard and various RAL colors available with antimicrobial powder coating. Call for custom color requests.

### Recycled Content

Up to 78 % recycled content used.

### Warranty

All products are guaranteed for 2 years by Displays Outlet with below conditions:

[Warranty Conditions](#)

### Storage Conditions

Goods should be stored at 32°F to 77°F in a dry place. Store in the original package.

### Installation Considerations

Premium A Boards are packed in a single box with an easy-to-understand instruction sheet. One set includes double sided snap open frames for quick poster change, 2 aluminium header profiles for displaying logo or permanent messages, 2 anti-reflex poster covers, hinges for easy transport and storage with a locking stay to secure when open, anodised legs and scissors for keeping the system stable. Each unit has water drainage slots on bottom profiles. No tool assembly. Optional Brochure Baskets are not included, should be ordered separately.

### Design Considerations

Double-sided Heavy Duty Pavement Sign with "Click Clack" snap-open design. Suitable for silk screen printing on frame, max. letter height is 15 mm. Logo can be laminated on aluminum header profile. Suitable for 20"x30", 22"x28" and 30"x40" poster sizes with a sight angle that stops passers-by. Heavy back panel provides stability.

### Cleaning and Disinfecting

Clean your displays, with damp microfiber clothes, rinsed with simply water or warm, soapy or gentle shampooed water. Avoid using vinegar, abrasive, acidic, alcohol-based or heavy cleaners or cleaners containing Ammonia. Only after cleaning the product, if needed, simply apply disinfectant or sanitizer that is in compliance with your local guidelines and regulations.

### Hazardous Substances

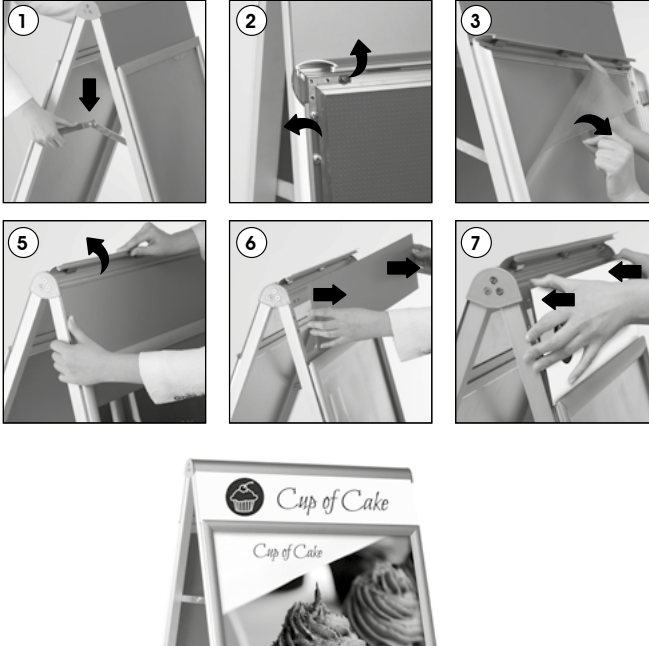
Displays Outlet prioritizes compliance with the REACH (Registration, Evaluation, Authorisation and Restriction of Chemicals ) and RoHS (Restriction of Hazardous Substances) directives to protect both the environment and human health. We ensure that our products do not contain substances listed under REACH and adhere to strict RoHS limits for hazardous materials. Our manufacturing process ensures that lead, mercury, cadmium, and other restricted substances remain within the permitted thresholds, guaranteeing safe and sustainable products for our customers.

## INSTALLATION INSTRUCTIONS

### Premium A Board with Logo / 1008655

Each product includes

- 2 x PET cover
- 2 x Header panel



- Please inform the order number on the product or on the carton (e.g. 1/110001394-460) to the place that you have made the purchase if any problem with the product occurs.
- Lütfen üründeki herhangi bir sorun için ürünün veya paketin üzerindeki sipariş numarasını (örnek: 1/110001394-460) satın aldığınız yere bildiriniz.
- All rights reserved. All pictures, figures and writings are secured internationally by copy-right law. Infringements will be sued by civil and legal law.

This technical sheet's contents are all subject to update and modification at Displays Outlet' exclusive discretion. There is nothing official about this document. For final and legally binding information, please get in touch with the sales staff at Displays Outlet.



T: +1 855-478-0652 / [info@displaysoutlet.com](mailto:info@displaysoutlet.com) / [www.displaysoutlet.com](http://www.displaysoutlet.com)