

SLIDE-IN A BOARD



DOUBLE SIDED SIDEWALK SIGNS WITH TOP OPENING DESIGN

Top opening Slide-in A Board is a practical product. Suitable for outdoor use. Available in Grey and Black finishes. Poster stands stable in between cover and backing. Rubber feet increase the product life as well as giving a clean finish to Slide-in A Board.

KEY SELECTION ATTRIBUTES

- Double-sided Pavement Sign with top opening slide-in design.
- Easy to use by sliding posters from snap opening top profile in between PET cover and PP backing.
- Suitable for outdoor use as it is heavy and rust-proof.
- One set includes double sided frames with top opening design, 2 anti-reflex PET poster covers, 2 PP backings, rubber feet, hinges, and scissors for keeping the system stable.
- Bottom profile of sandwich slide-in panel provide easy application.
- Rubber feet increase the product life as well as giving a clean finish to Slide-in A Board.
- Optional brochure baskets are not included, should be ordered separately.
- Silver and black colours in standard and various RAL colors available with antimicrobial powder coating.
- Standard Poster Thickness: 0.0039" – 0.0078".
- Max poster thickness 0.16" when used without PP backer.
- In case a rigid board used as poster, max thickness is 0.28" without using U poster profile. If U profile is used, max 0.16" thick board can be attached onto the U profile.
- Packed in a single box with an easy-to-understand instruction sheet
- No tool assembly.



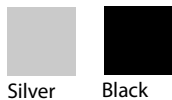
Black



Silver



COLOURS IN STOCK



Silver Black

COLOUR OPTIONS

Black Anodised

White - RAL 9003

Red - RAL 3020

Blue - RAL 5002

Green - RAL 6029

Yellow - RAL 1021

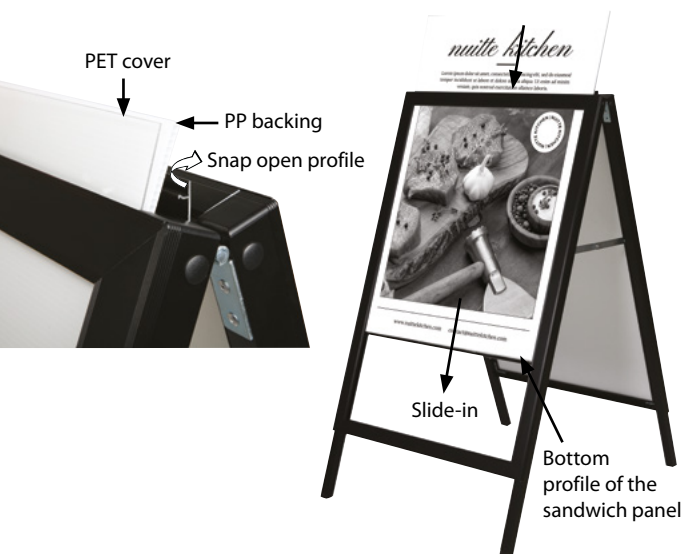
SUITABLE FOR

Slide-in A Boards can be used for INDOOR and OUTDOOR applications, for signage needs in many locations like shopping centers, markets, groceries, hotels, offices, airports, shops and stores, hospitals, schools, apartments and many more.

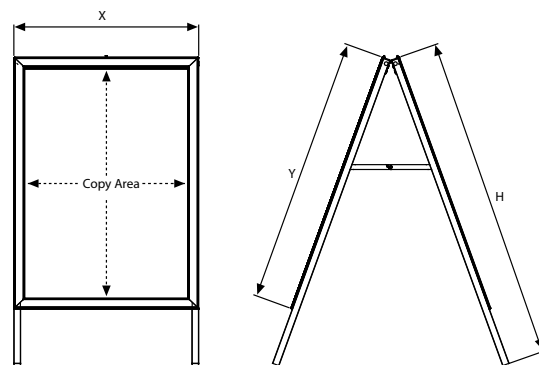
FEATURES



EXPLODED VIEW



TECHNICAL DRAWING



PHYSICAL DATA

Material

1.57" aluminium profile, PET anti-reflex poster cover, PP backing.

Poster Material & Thickness

0.0039" – 0.0078" for standard product. Max poster thickness 0.16" when used without PP backer. In case a rigid board used as poster, max thickness is 0.28" without using U poster profile. If U profile is used, max 0.16" thick board can be attached onto the U profile. Any non-standard poster thicknesses should be indicated with order.

Surface Finish

Natural silver-anodized, or black powder coated in standard and various RAL colors available with antimicrobial powder coating. Call for custom color requests.

Recycled Content

Up to 78% recycled content used.

Warranty

All products are guaranteed for 2 years by Displays Outlet with below conditions:

[Warranty Conditions](#)

Installation Considerations

Slide-in A Boards are packed in a single box with an easy-to-understand instruction sheet. One set includes double sided frames with top opening design, 2 anti-reflex PET poster covers, 2 PP backings, rubber feet, hinges, and scissors for keeping the system stable. No tool assembly. Optional Brochure Baskets are not included, should be ordered separately.

Storage Conditions

Goods should be stored at 32°F to 77°F in a dry place. Store in the original package.

Design Considerations

Double-sided Pavement Sign with top opening slide-in design. Suitable for outdoor use with 22" X 28", 24" X 36", 30" X 40" poster sizes with a sight angle that stops passers-by. Easy to use by sliding posters from snap opening top profile in between PET cover and PP backing. Bottom profile of sandwich slide-in panel provide easy application. Rubber feets increase the product life as well as giving a clean finish to Slide-in A Board. Suitable for silk screen printing, max. letter height is 0.79".

Cleaning and Disinfecting

Clean your displays, with damp microfiber clothes, rinsed with simply water or warm, soapy or gentle shampooed water. Avoid using vinegar, abrasive, acidic, alcohol-based or heavy cleaners or cleaners containing Ammonia. Only after cleaning the product, if needed, simply apply disinfectant or sanitizer that is in compliance with your local guidelines and regulations.

Hazardous Substances

Displays Outlet prioritizes compliance with the REACH (Registration, Evaluation, Authorisation and Restriction of Chemicals) and RoHS (Restriction of Hazardous Substances) directives to protect both the environment and human health. We ensure that our products do not contain substances listed under REACH and adhere to strict RoHS limits for hazardous materials. Our manufacturing process ensures that lead, mercury, cadmium, and other restricted substances remain within the permitted thresholds, guaranteeing safe and sustainable products for our customers.



T: +1 855-478-0652 / info@displaysoutlet.com / www.displaysoutlet.com

PRINT TEMPLATES

Slide-in A Board - 22" x 28"
Document Size: 22.4" x 28.4" (Includes Bleeds)
Finished Size: 22" x 28"

Slide-in A Board - 24" x 36"
Document Size: 24.4" x 36.4" (Includes Bleeds)
Finished Size: 24" x 36"

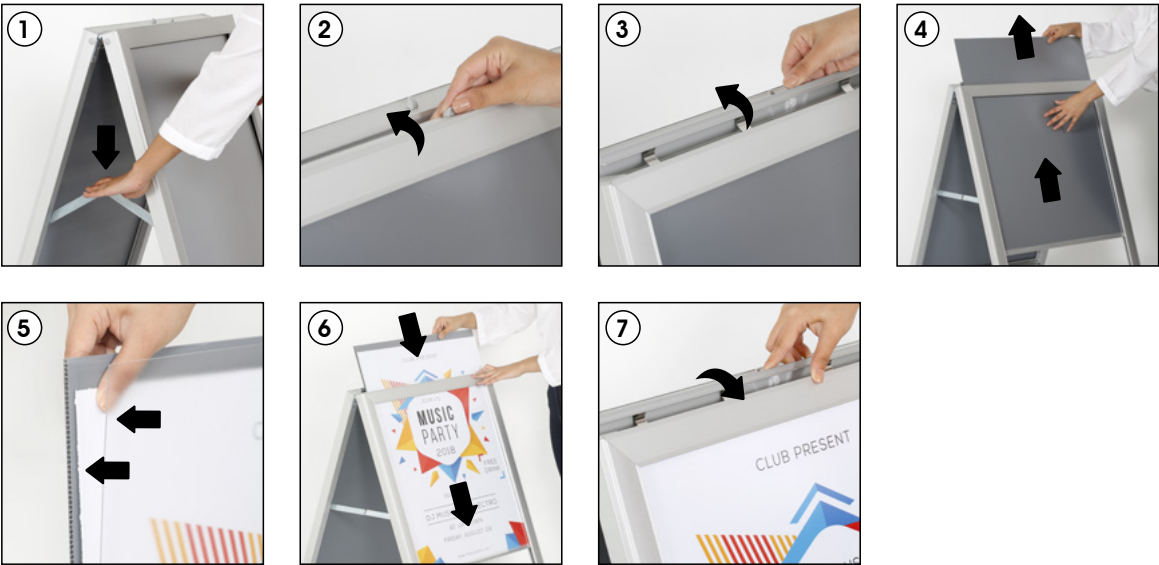
Slide-in A Board - 30" x 40"
Document Size: 30.4" x 40.4" (Includes Bleeds)
Finished Size: 30" x 40"

ARTICLES

						WEIGHT	PACKING SIZE
GRAY	BLACK	EXTERNAL (x-y)	POSTER	COPY	H	WITH PACKING	*W X H X D
VBCT101133	VBCT1C1133	24.24"X 30.24"	22" X 28"	21.09" X 27.09"	45.28"	16.314 lbs	25.59" X 38.98" X 3.35"
VBCT101135	VBCT1C1135	26.24" X 38.24"	24" X 36"	23.09" X 35.09"	45.28"	23.765 lbs	28.35" X 50" X 3.35"
VBCT101145	VBCT1C1145	32.24" X 42.24"	30" X 40"	29.09" X 39.09"	49.21"	23.258 lbs	34.65" X 53.94" X 3.35"

INSTALLATION INSTRUCTIONS

Slide-in A Board / 1008625



Each Slide-in A Board includes
(2 PET covers & 2 PP backings).



- Please inform the order number on the product or on the carton (e.g. 1/110001394-460) to the place that you have made the purchase if anyproblem with the product occurs.
- All rights reserved. All pictures, figures and writings are secured internationally by copy-right law. Infringements will be sued by civil and legal law.

This technical sheet's contents are all subject to update and modification at Displays Outlet' exclusive discretion. There is nothing official about this document. For final and legally binding information, please get in touch with the sales staff at Displays Outlet.

